

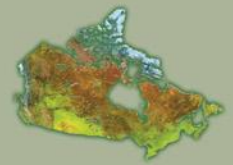


# NDF WORKSHOP CASE STUDIES

## WG-1, Case Study 6

### Genus-level Approach to *Taxus* Species

*Ken Farr,*  
*CITES Scientific Authority, Natural Resources Canada,*  
*Canadian Forest Service*



- Purpose of is not to describe a specific non-detrimental finding procedure applicable to all *Taxus* spp.
- Case study presents an approach to sustainable harvest of the species *Taxus canadensis*
- Intent is to inform a discussion around making of non-detrimental findings for other *Taxus* species



- Initial question: Does this NDF case study belong in Trees Working Group? “Yes”, because ...
- Involves a long-lived understorey woody species
- An example of a challenge facing forest managers: reconcile timber and non-timber resource demands
- sustainable approach requires knowing “For what do you wish to manage?”



- Classification of species in the genus *Taxus* “notoriously difficult”
- “One species with numerous varieties” (Pilger, 1903)
- “Twenty-four species, 55 varieties” (Spjut, R.W. 1999).
- CITES (Farjon, 2001): 10 species, 3 infraspecific taxa within the genus
- 5 CITES Appendix II listed spp. (Asia)
- 5 non-listed (Europe and North America)



## CITES Appendix II-Listed Species

### IUCN Status

- *Taxus chinensis* (LR/lc)
- *Taxus cuspidata* LR/lc
- *Taxus fuana* Vulnerable (VU D2)
- *Taxus sumatrana* LR/lc
- *Taxus wallichiana* Data Deficient (DD)



## CITES Non-Listed Species

### IUCN Status

- *Taxus baccata* L. LR/lc
- *Taxus brevifolia* Lower Risk Near Threatened
- *Taxus canadensis* LR/lc
- *Taxus floridana* Critically Endangered  
CR B1+2c
- *Taxus globosa* LR/nt



Global Distribution, Genus *Taxus* (Earle, 2008).



- North American spp.: “isolated individuals in discontinuous populations”
- Asian spp. “scattered individuals under the canopy of other trees rather than as dominant species”
- Main threats to populations: habitat loss/degradation (human induced) & harvesting



# Morphology



© W J Hayden

*T. baccata*



*T. canadensis*



*T. baccata* x *T. cuspidata* = *T. x media*



- Non-resinous, evergreen gymnosperms (Pinophyta)
- Slow-growing, shade-tolerant understorey plants
- Many species reported as extremely slow-growing, long lived, taking 100 years or more to attain appreciable size
- Lateral branches well developed, similar to leading shoots (of interest in biomass collection)



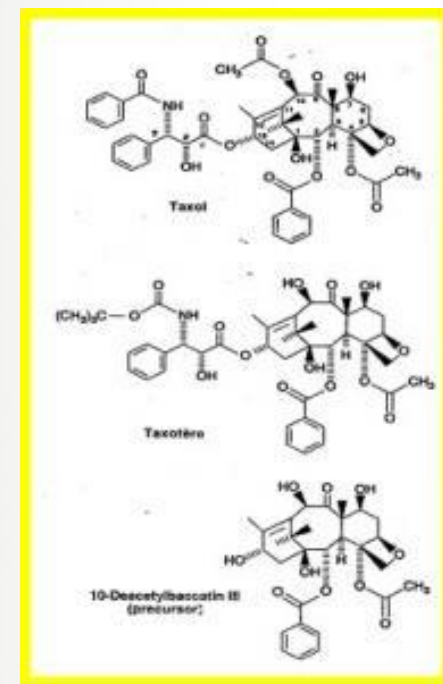
- *T. wallichiana* (Himalayan yew) reported to reach 20 (30) m with dbh to 1 (1.5) m
- *T. canadensis* (Canada yew) a sprawling multi-stemmed shrub rarely exceeding 2 m
- Numerous yew cultivars exist; exhibit distinct morphological variance in growth form, habit and needle form and colour



*T. x media* 'Hicksii'



- Biomass (leaves, twig, bark, roots) of all *Taxus* species contains a unique class of diterpenoid alkaloids (taxanes)
- Since the 1990s, phenomenal pharmaceutical demand for paclitaxel and other taxane compounds
- paclitaxel (trade name Taxol), used to treat a range of human cancers





- Approximately 30,000 kg of *Taxus* biomass required to produce 1kg of refined paclitaxel
- Estimated 400 kg per year of paclitaxel products marketed annually in North America and Europe, global market estimated at 800 -1000 kg (2001)
- World sales of Paclitaxel in 2003 estimated at \$4.2 billion US, were expected to grow to \$13 billion US by 2008



- Demand for Taxol in North America and Europe in 2002 estimated to require 12,000,000 kg of *Taxus* biomass
- Large paclitaxel production facilities exist worldwide, including facilities in India, China, North America and Europe
- Import and export of biomass of one or another *Taxus* spp. is largely a function of supply and cost

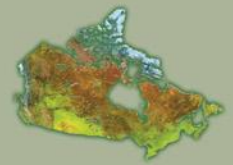


- Demand for Taxol in North America and Europe in 2002 estimated to require 12,000,000 kg of *Taxus* biomass
- Large paclitaxel production facilities exist worldwide, including facilities in India, China, North America and Europe
- **Import and export of biomass of one or another *Taxus* spp. is largely a function of supply and cost**





- *Taxus* biomass sometimes exported as dried needles and twigs
- More often as crude liquid or powdered extracts of varying concentrations
- Chemical extracts in trade vary from “brown liquor” shipped in drums to whitish powder
- Pure paclitaxel is a whitish or yellowish, crystalline material



## Harvest of Bark

- Bark from *T. brevifolia* (Pacific yew) was the first identified source of paclitaxel
- 10,000 kg of Pacific yew bark required to make 1kg of Taxol
- Bark from 52 000 to 78 000 yew trees harvested annually during the early 1990's
- By definition destructive, approach discontinued in 1993 by producer (Bristol Myers Squibb)



## Harvest of Leaf and Twig Biomass

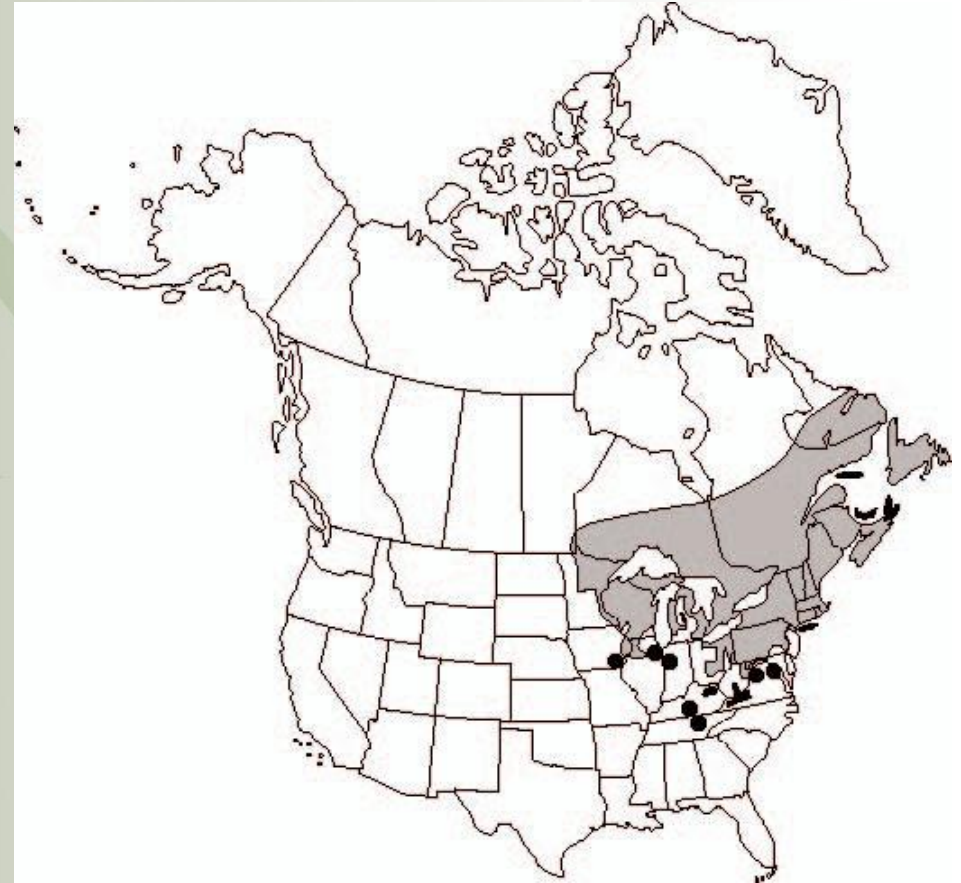
- Taxanes found to occur in the stem bark, roots and needles of other yew species e.g. *T. wallichiana* (Himalayan yew)
- Emerged as an alternate harvesting approach that had potential to support repeatable and sustainable harvesting





- Management approach here presented is specific to one non-CITES listed sp. (*T. canadensis*)
- Historically, species was not seen as commercially important, largely missed in forest resource inventories \*
- \* Will be captured in “next generation” forest inventories

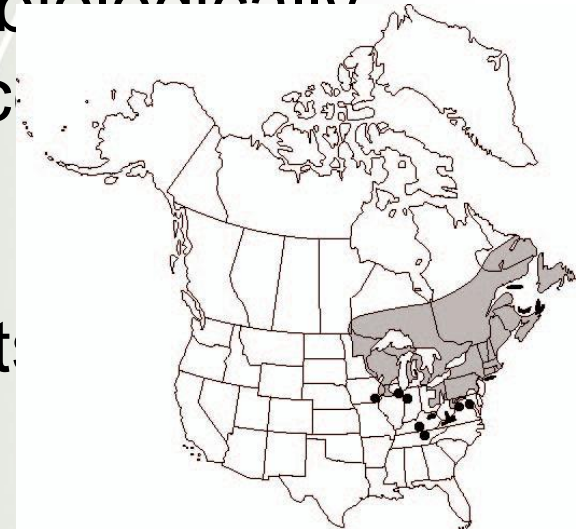
# Example, *T. canadensis*



Distribution, *Taxus canadensis*



- Early 1990's, sudden interest in *T. canadensis* as an alternative source of income for rural communities
- Lead, initially, to excessive and biologically unsustainable harvesting practices
- Experience suggested unlimited harvesting in the accessible parts of sp. range could result in localized commercial extinction





- Response: formation of an *ad hoc* Working Group (Canadian Ground Hemlock Working Group)
- Comprised of Canadian Federal and Provincial forestry officials, private sector growers, harvesters and paclitaxel producers
- Worked together to establish voluntary harvesting guidelines, principles, corresponding criteria and indicators



Guidelines and principles were intended to address:

- adherence to applicable provincial and federal legislation and international treaties
- conservation of biodiversity, soil and water on harvest sites
- monitoring and tracking to ensure harvesting met sustainability





- Guidelines focused on the level of harvest intensity that can reasonably be employed if full regeneration of the harvested population is expected
- Initial guidelines suggested removal of 4 or 5 years of growth was ‘biologically’ acceptable
- View was based on provision plants would not be re-harvested for period of time equal to, or longer than, the number of years of growth extensions removed



- Guidelines focused on the level of harvest intensity that can reasonably be employed if full regeneration of the harvested population is expected
- Initial guidelines suggested removal of 4 or 5 years of growth was ‘biologically’ acceptable
- View was based on provision plants would not be re-harvested for period of time equal to, or longer than, the number of years of growth extensions removed



- Subsequent research and harvest trials suggested plants require a period of time significantly longer than 5-6 years to recover
- Physiological research, field testing determined optimum sustainable harvest level is removal of not more than 3 years of growth (i.e. 3 most current seasonal growth extensions) from any stem
- Revised guidelines reflected discussions among harvesters and harvest contractors



## Significant point:

- Biomass harvest limits are applied directly to individual stems, rather than indirectly to (e.g.) volume of biomass per unit of harvested land area
- Guidelines are applied on Crown (publicly owned) lands in two Canadian provinces, part of legal framework in one province



## Guidelines Also Consider:

- Timing of harvest
- Selection of plants for harvest (minimum plant size)
- Stem retention (one in five)
- Harvesting methods (tools, procedures)
- Optimum time between harvests (4 years)



Principles establish best practices and ‘code of conduct’ i.e. :

- Adhere to legal frameworks
- Maintain viability of natural populations
- Conserve the quality and quantity of biomass
- Ensuring conservation of biodiversity, soil, water and other ecosystem attributes



- In Canada, conservation of wild species is multi-jurisdictional, under authority of various provincial, territorial, and federal acts related to wildlife management
- Specific regulation of *T. canadensis* harvest varies by jurisdiction



- Linkage of harvest intensity to a physiologically-based rate of annual stem growth is a transferable method for informing non-detriment determination
- Stem-specific control approach is an “allowable cut” estimation that, if verifiable, ensures non-detrimental harvest





Additional monitoring and control methods employed:

- requirements for harvest site mapping and reporting
- mandatory training and licensing of biomass harvesters and sellers
- chain-of-custody and transport controls
- limit of legal biomass export and import to licensed buyers

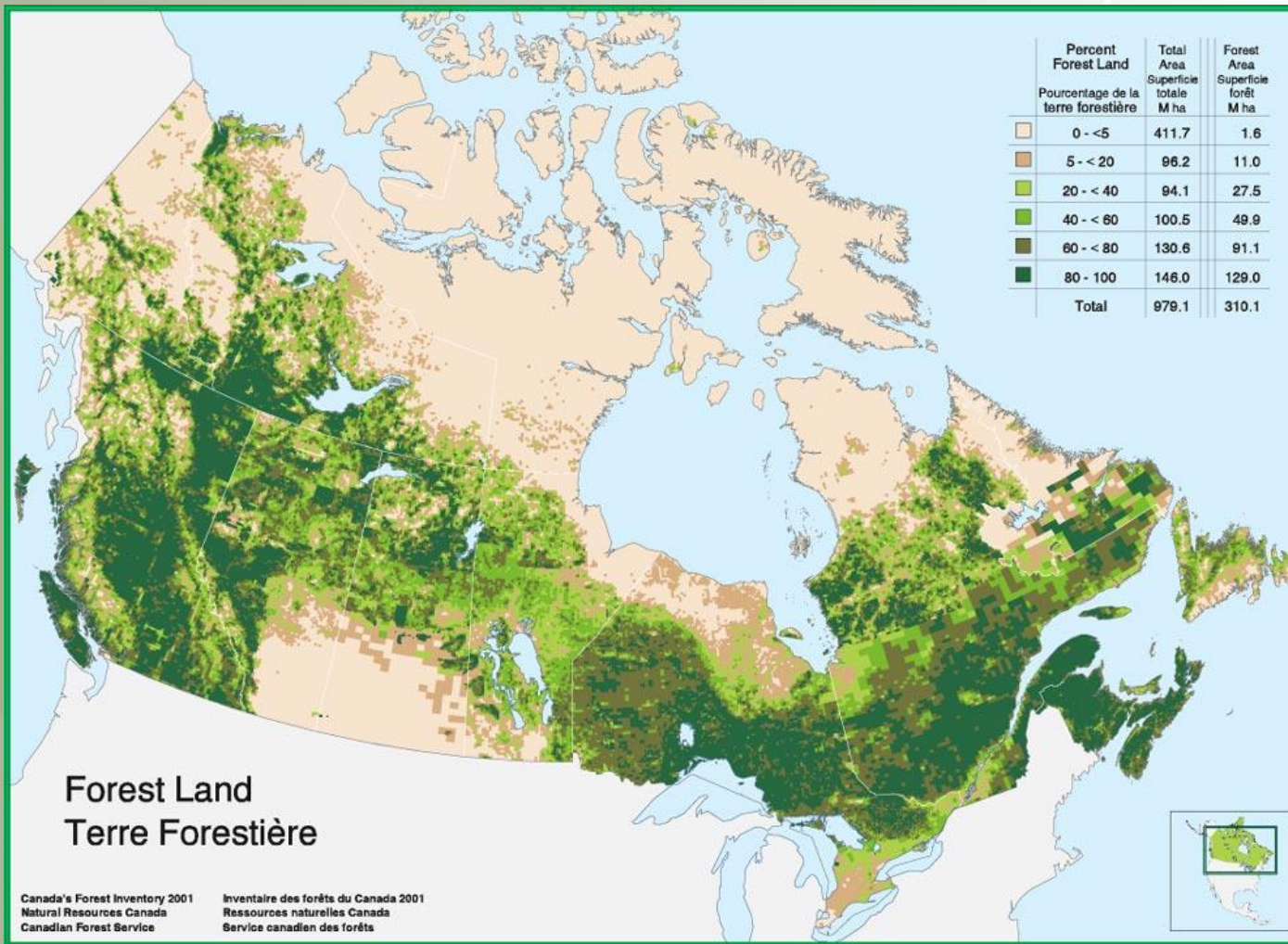


- Linkage of harvest intensity to a physiologically-based rate of annual stem growth should be a transferable method for informing non-detriment determination
- Use of stem-specific measurements in harvest guidelines can serve to reduce regulatory burdens (i.e.) regulation by area, volume

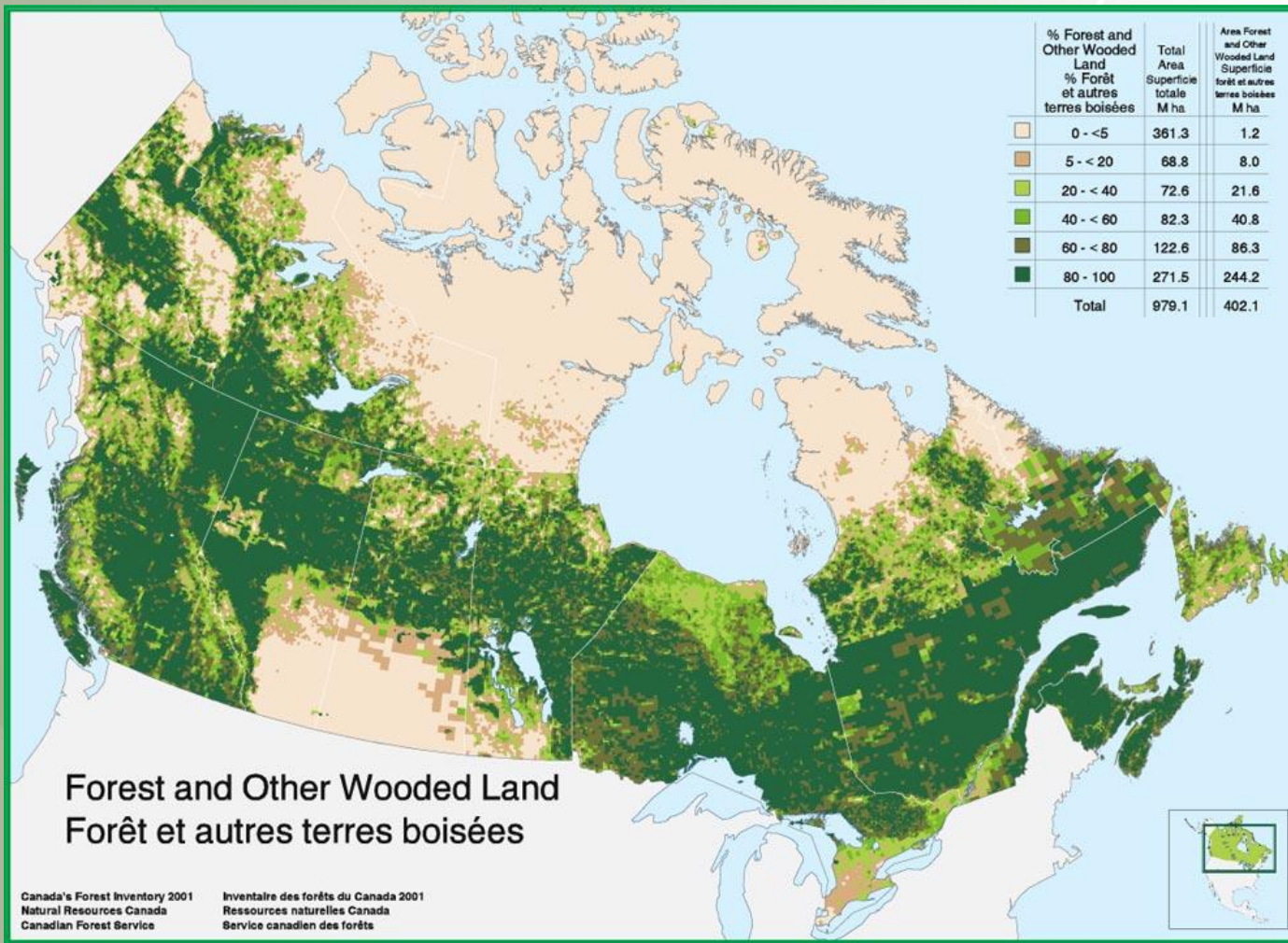


- Process here described a response to sudden, unexpected, uncontrolled and unsustainable demand pressure on an understorey species outside mainstream forest management
- In such situations, botanical and ecological data, forest classification data, modeling, may be required as short-term replacement for detailed forest resource inventories

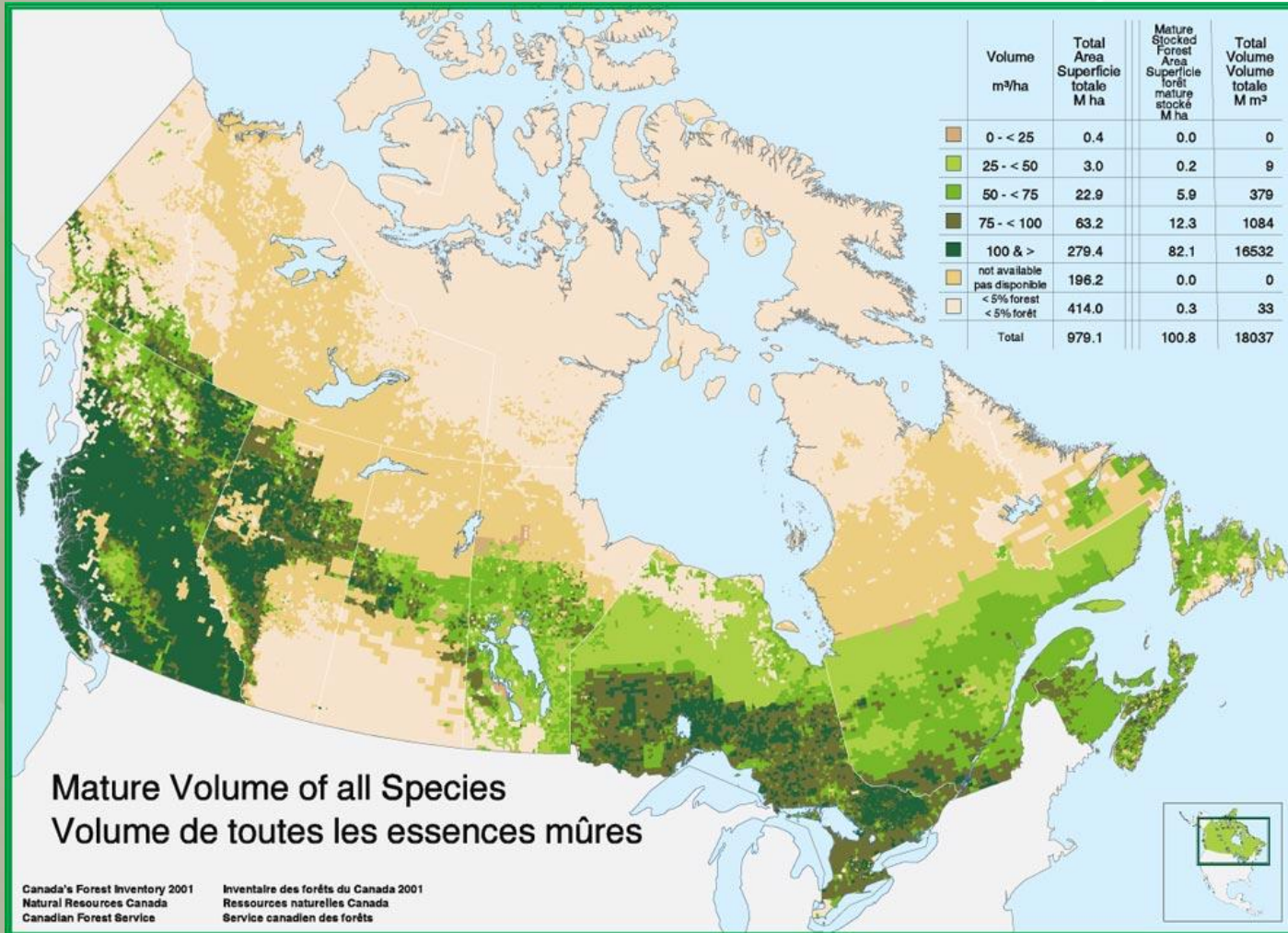
# NDF Considerations



# NDF Considerations



# NDF Considerations



# Considerations for NDFs



# Considerations for NDFs

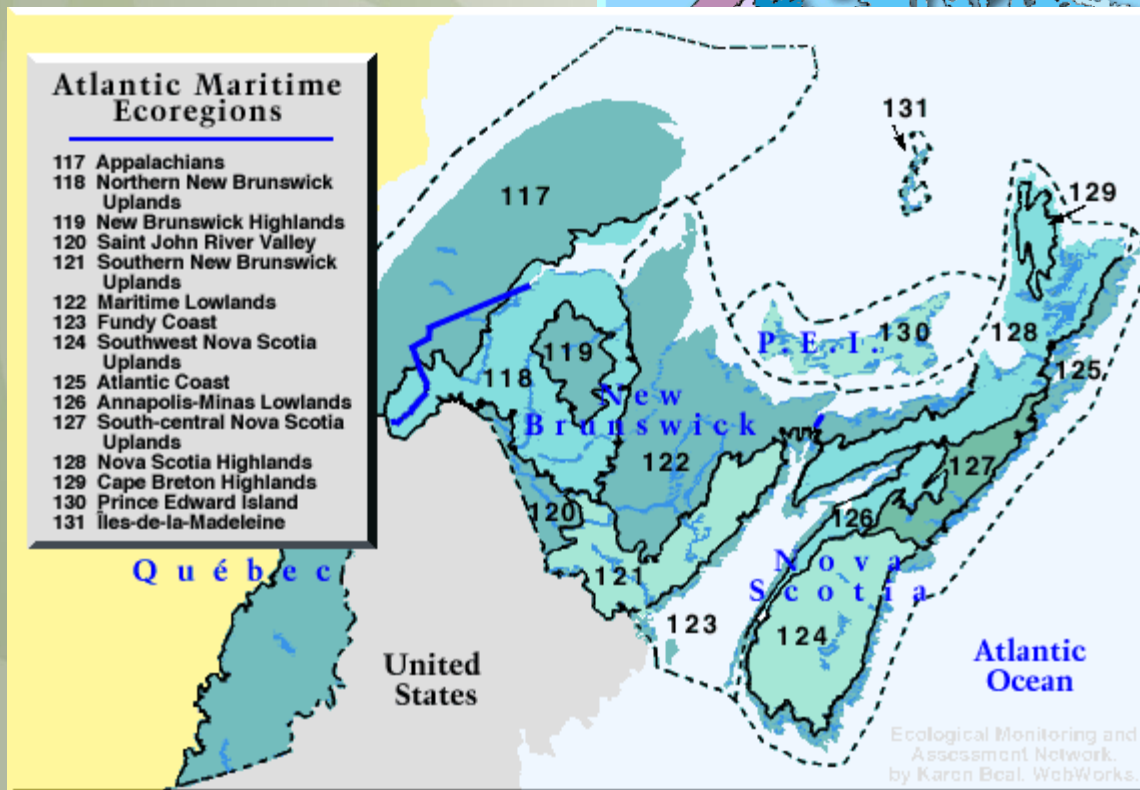


## Terrestrial Ecozones of Canada

- Arctic Cordillera
- Northern Arctic
- Southern Arctic
- Taiga Plains
- Taiga Shield
- Boreal Shield
- Atlantic Maritime
- Mixedwood Plains
- Boreal Plains
- Prairies
- Taiga Cordillera
- Boreal Cordillera
- Pacific Maritime
- Montane Cordillera
- Hudson Plains

## Atlantic Maritime Ecoregions

- 117 Appalachians
- 118 Northern New Brunswick Uplands
- 119 New Brunswick Highlands
- 120 Saint John River Valley
- 121 Southern New Brunswick Uplands
- 122 Maritime Lowlands
- 123 Fundy Coast
- 124 Southwest Nova Scotia Uplands
- 125 Atlantic Coast
- 126 Annapolis-Minas Lowlands
- 127 South-central Nova Scotia Uplands
- 128 Nova Scotia Highlands
- 129 Cape Breton Highlands
- 130 Prince Edward Island
- 131 Îles-de-la-Madeleine





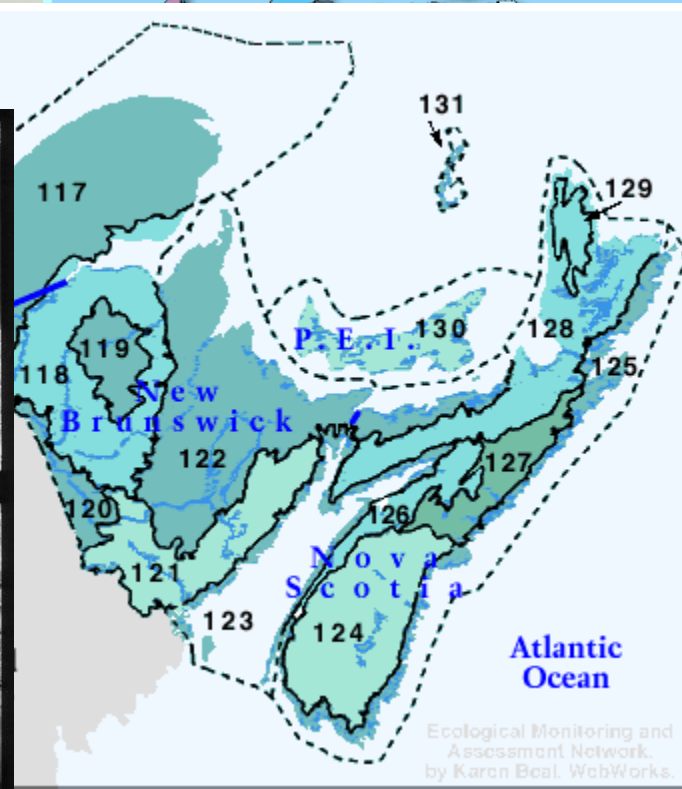
# Considerations for NDFs



## Terrestrial Ecozones of Canada

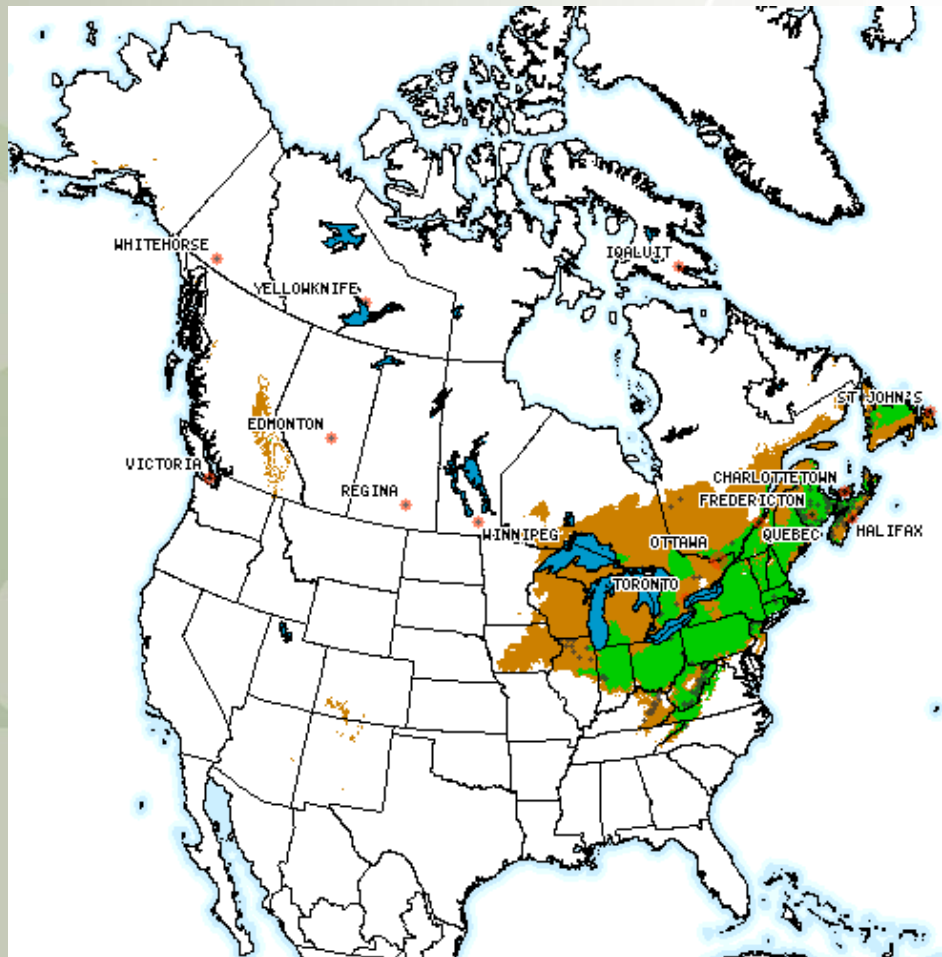
- Arctic Cordillera
- Northern Arctic
- Southern Arctic
- Taiga Plains
- Taiga Shield
- Boreal Shield
- Atlantic Maritime
- Mixedwood Plains
- Boreal Plains
- Prairies
- Taiga Cordillera
- Boreal Cordillera
- Pacific Maritime
- Montane Cordillera
- Hudson Plains

## Atlantic Maritime Ecoregions





- *T. canadensis* bio-map (climate and digital elevation modeling using ANUCLIM)





- Stem-specific harvest limits contained in the guidelines can produce measurable economic advantages for harvesters
- Positive economic outcomes are linked to quality and quantity of product (taxanes) in biomass harvested, and to reduced travel, transport and operating costs



- Process here described arose from a “wild west” situation ... sudden, uncontrolled and unsustainable pressure on species
- In such cases, what is minimum information required for making an NDF?
- Full adherence to guidelines that evolved for *T. canadensis* (a sustainable stem-specific harvest) would equate (functionally) to a NDF



- Case study is about management (therefore not an NDF) but was based on an NDF ‘finding’ – a harvest limit based on a species specific morphology, physiology
- Inclusive approach (regulators, harvesters, buyers, commodity producers) was a component of success



- Global NTFP market (pharmaceuticals) evolves, relocates more rapidly than fibre market – ability to consider, produce NDF's quickly required
- NTFP and traditional forest management approaches increasingly linked ... (a challenge for managers and Scientific Authorities)
- Final point for consideration ... sustainable harvest does not equate to sustainable forest management



# NDF WORKSHOP CASE STUDIES

## WG-1, Case Study 6

# Genus-level Approach to Taxus Species

*Ken Farr,  
CITES Scientific Authority, Natural Resources Canada,  
Canadian Forest Service*